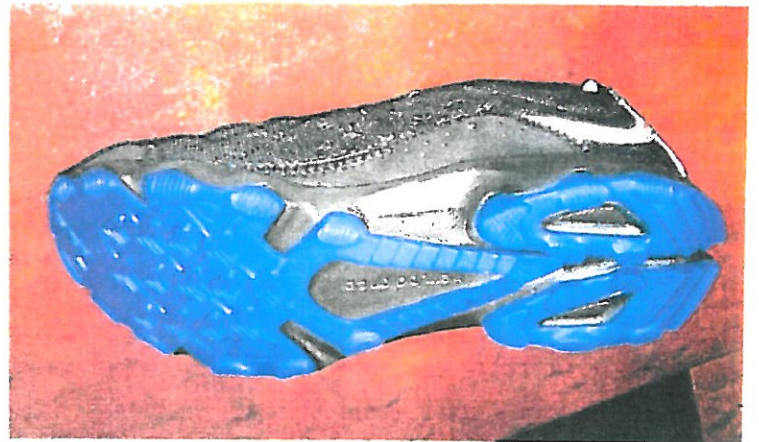
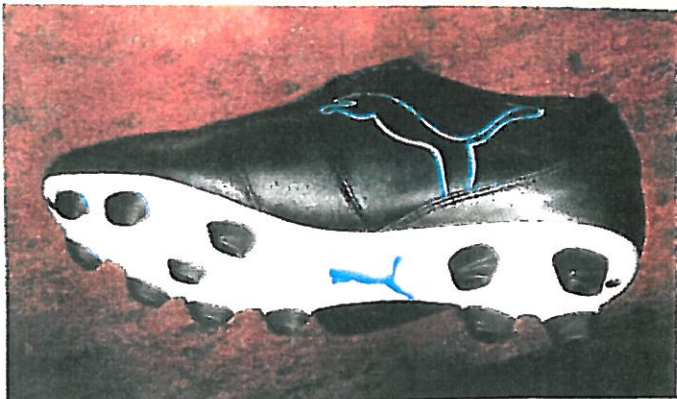
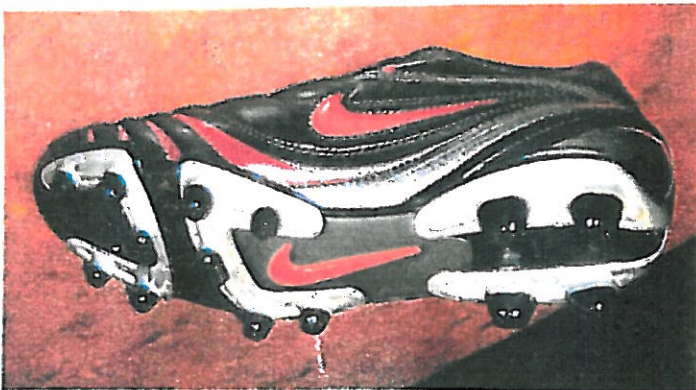


## *Drayson Center Field Athletic Shoe Policy*

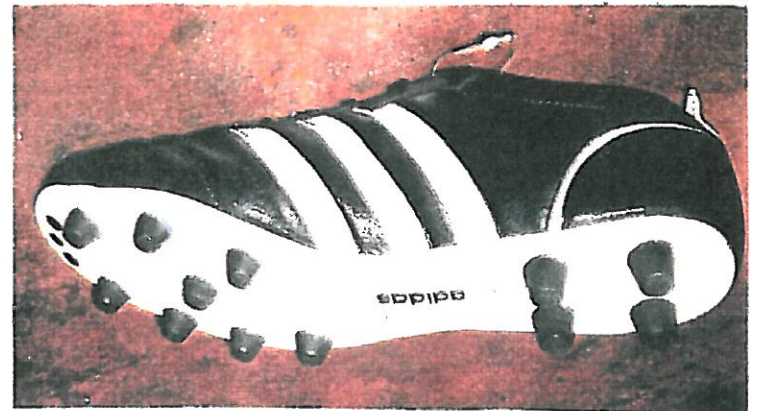
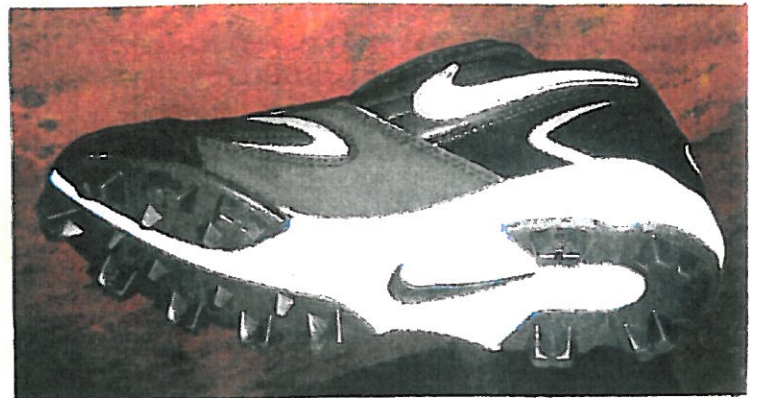
These shoes shown on the following pages are to show which athletic shoes are acceptable and which are not acceptable for athletic participation. Due to safety issues and for the preservation of the turf, any shoes with metal spikes, hard plastic/nylon cleats which have a sharper edge in nature, or any screw in type cleats will not be allowed. Only those athletic shoes with a round or oblong shape cleats which are a rubber type and have a flat point on the ends will be allowed.

### ACCEPTABLE CLEATS



**A BIG THANKS TO SPORTS CHALET IN REDLANDS FOR  
ALLOWING THESE PICTURES TO BE TAKEN.**

ACCEPTABLE CLEATS (cont.)



THESE CLEATS ARE NOT ACCEPTABLE

